



# Tonicum

... so that the liver metabolism works optimally even in critical phases.

- Liver is the central metabolic organ in all animal species
- Stable metabolism = animal welfare and health
- Stable metabolism = safe performance
- Performance = Profitability



## Liver metabolism and its significance

The liver is the central metabolic organ in all animal species. It is particularly important in the energy metabolism processes that are important for performance and health maintenance. Stress and other metabolic burdens can have a clearly negative effect on the liver and the processes taking place in it. Consequences: Changes in liver tissue up to fatty liver symptoms, e.g. in laying hens, as well as reduced metabolic performance and consequently, for example, reduced egg production.

## How incona Tonicum supports

Especially in stressful situations and under metabolic stress, the fast additional supply of vitamins such as choline and carnitine in highly available form as well as the important amino acid methionine are very important. Natural plant extracts from artichoke and milk thistle additionally support the liver in metabolic processes and its tissue regeneration.

## How to use incona Tonicum

The efficient and quick application is achieved by dosing into the drinking water. This can be done directly into the drinking water pipe via flow tanks or special dosing devices.

### Laying hens

#### Period of application

→ 3 days in 24th week of life; afterwards every 4 weeks for 3 days; during heat stress at least 3 days

### Broiler & turkeys

#### Period of application

→ 1st to 3rd day of life; to each feed change for 3 days; during heat stress at least 3 days

### Sows

#### Period of application

→ from 5 days before until at least 7 days after farrowing

### Piglets

#### Period of application

→ first 14 days after weaning; to each feed change for 3 days; in special stress phases at least 3 days

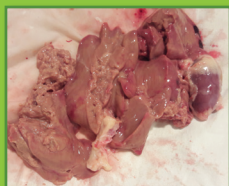
### Fattening pigs

#### Period of application

→ first 3 days of fattening period; to each feed change for 3 days; in special stress phases at least 3 days

**Dosage: 0.5 to 1.0 L per 1.000 L of drinking water for all animal species**

It is recommended to start with the higher dosage and then gradually reduce to the minimum dosage. Practical experience shows that an application of at least 3 days is particularly successful. The individual application (dosage and duration) should be coordinated with a specialized consultant.



Broiler  
without  
incona  
Tonicum



Broiler  
with  
incona  
Tonicum



## Your advantages with incona Tonicum

- Liver metabolism is positively supported by a special combination of highly available vitamins, methionine and plant extracts
- Stable metabolism = animal welfare and health
- Stable metabolism = safe performance
- Performance = Profitability



## Gesellschaft für Tierernährung mbH

D-27793 Wildeshausen - Dügstruper Str. 10  
Tel- +49 (0)4431 9905-0  
Fax- +49 (0)4431 9905-55  
D-87700 Memmingen - Alpenstraße 46  
Tel- +49 (0)8331 9481-0  
Fax- +49 (0)8331 9481-40  
www.mineralfutter.de  
info@mineralfutter.de

